



Collaborative Research: Science for Caribou Recovery

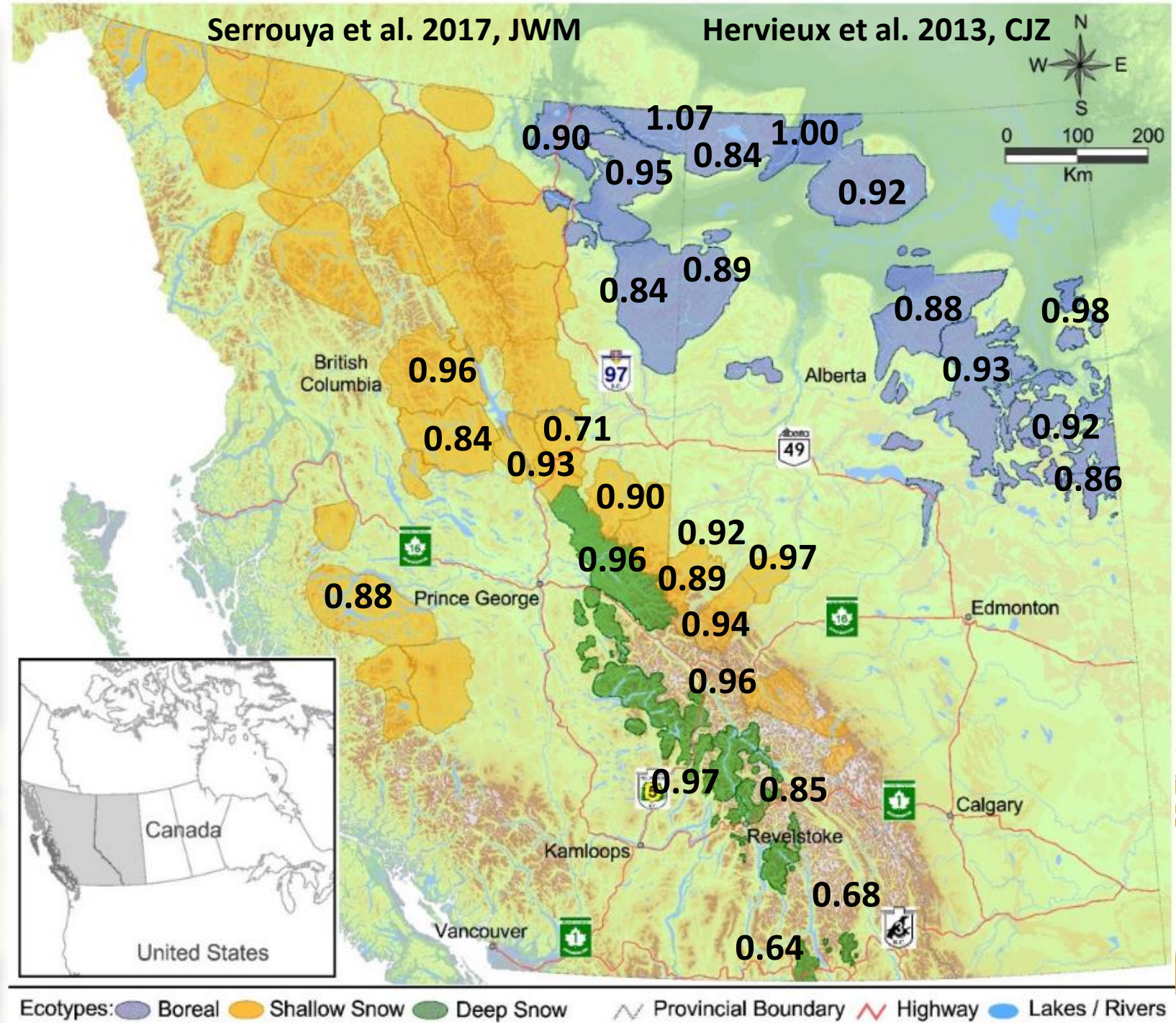
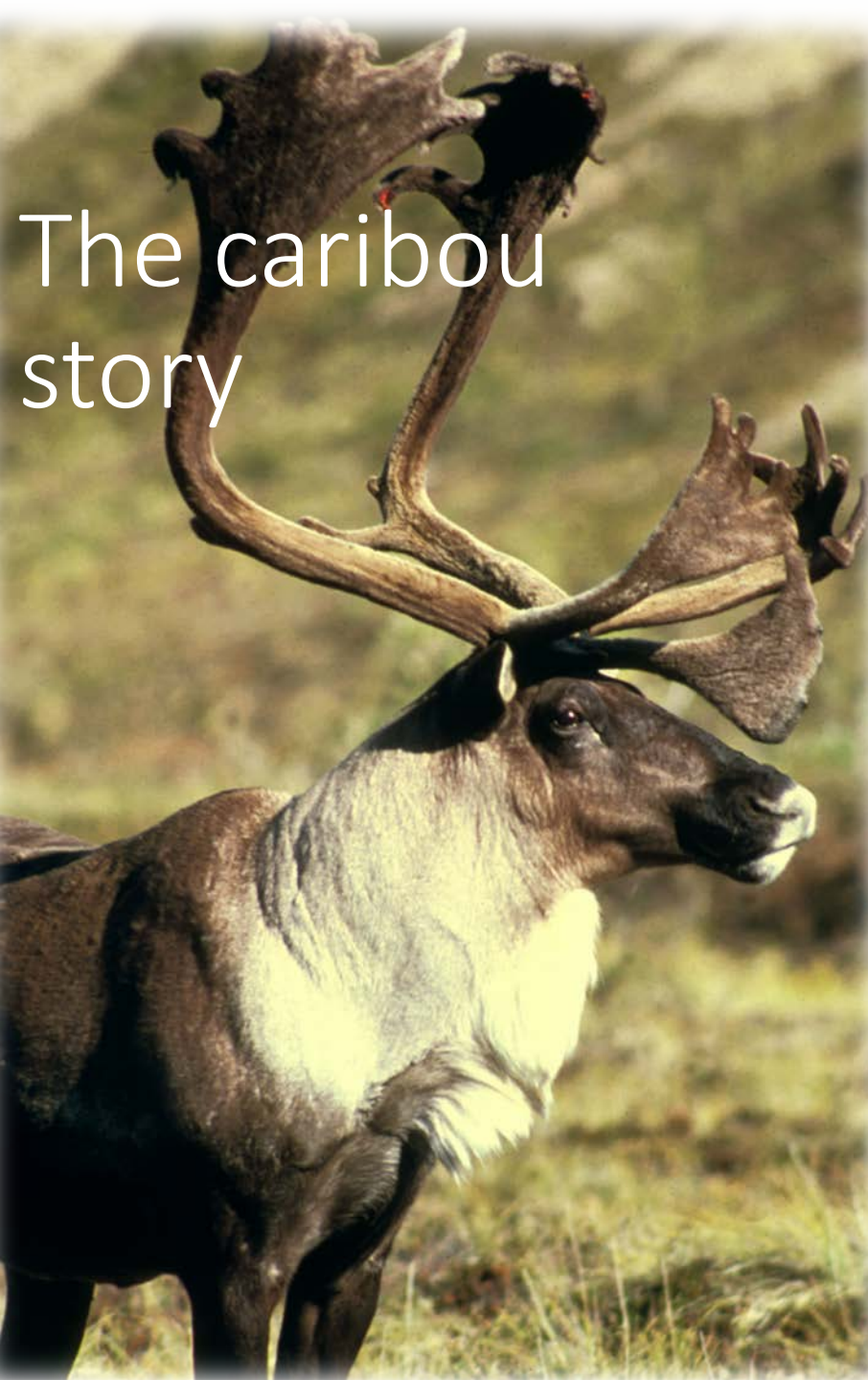
Caribou Monitoring Unit



CMU

CARIBOU
MONITORING
UNIT 

The caribou story



Caribou Monitoring Unit

- Supports woodland caribou recovery in western Canada
- Active research to understand:
 - causation behind caribou population declines
 - how we can start to recover populations



CMU Collaborations

- Research
- Prioritizing Restoration
- Testing Recovery Options



CMU Collaborations

- Research
 - Ecosystem Monitoring Camera Program
 - Caribou use of fire skips and the influence of fire on seismic recovery
- Prioritizing Restoration
- Testing Recovery Options



CMU Collaborations

- Research
 - Ecosystem Monitoring Camera Program
 - Caribou use of fire skips and the influence of fire on seismic recovery
- Prioritizing Restoration
 - Defining functional habitat recovery
 - Prioritizing areas for restoration in the Oil Sands Region
- Testing Recovery Options



CMU Collaborations

- Research
 - Ecosystem Monitoring Camera Program
 - Caribou use of fire skips and the influence of fire on seismic recovery
- Prioritizing Restoration
 - Defining functional habitat recovery
 - Prioritizing areas for restoration in the Oil Sands Region
- Testing Recovery Options
 - Regional Industry Caribou Collaboration
 - Predicting the effects of restoring linear features



CMU Collaborations

- Research

- Ecosystem Monitoring Camera Program
- Caribou use of fire skips and the influence of fire on seismic recovery



- Prioritizing Restoration

- Defining functional habitat recovery
- Prioritizing areas for restoration in the Oil Sands Region



- Testing Recovery Options

- Regional Industry Caribou Collaboration
- Predicting the effects of restoring linear features



CMU Collaborations

- Research

- Ecosystem Monitoring Camera Program
- Caribou use of fire skips and the influence of fire on seismic recovery

- Prioritizing Restoration

- Defining functional habitat recovery
- **Prioritizing areas for restoration in the Oil Sands Region**

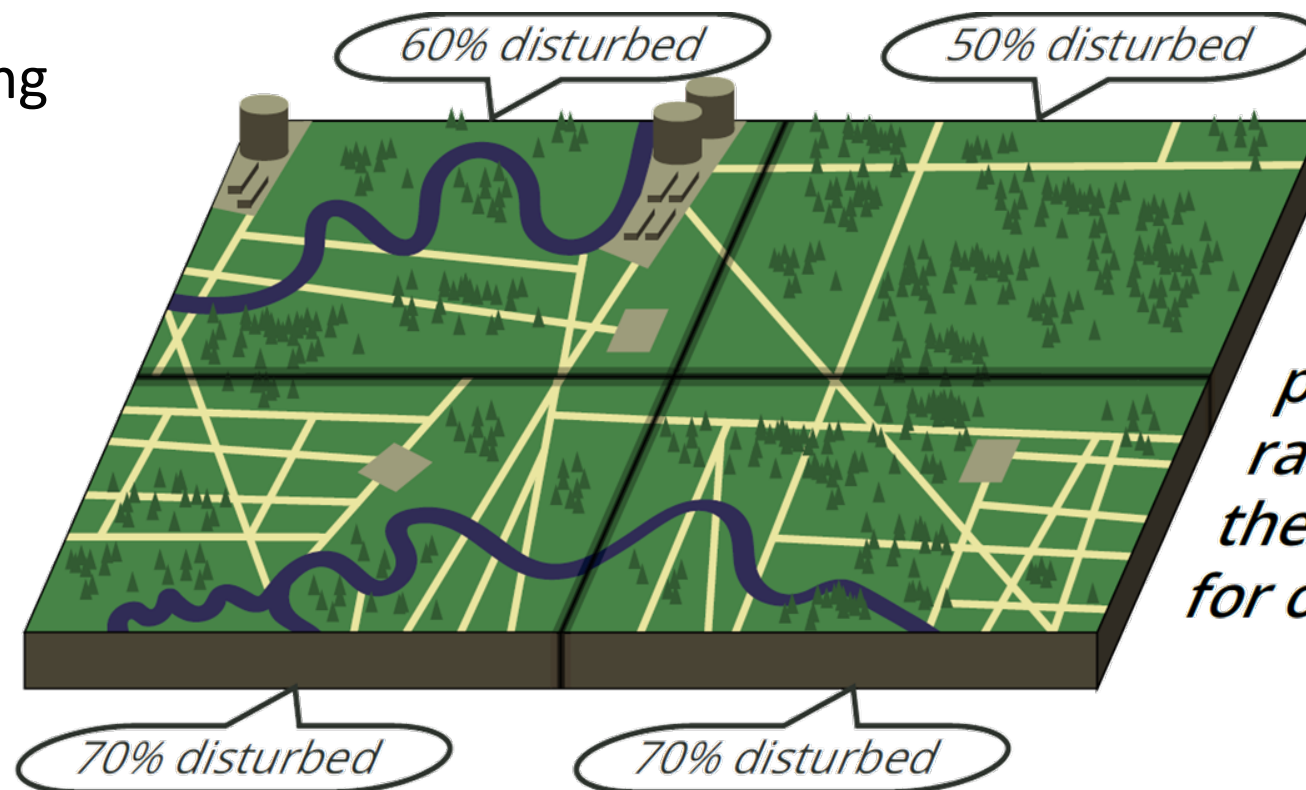
- Testing Recovery Options

- Regional Industry Caribou Collaboration
- Predicting the effects of restoring linear features



The Need:

- Collaboration with Canada's Oil Sands Innovation Alliance
- Recognizing the need to prioritize restoration
 - Expensive
 - Time consuming
 - Urgent
 - Effectiveness



***In a working landscape,
how do we
prioritize resto-
ration to get
the best “bang”
for our “buck?”***

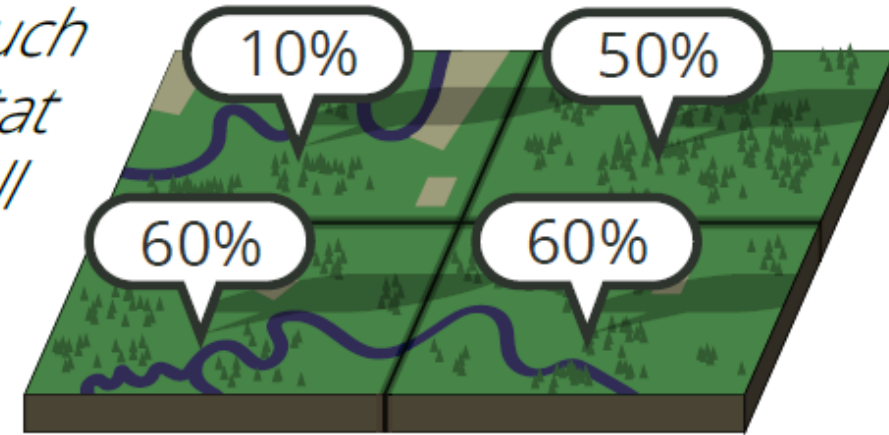


The Approach:

the BANG:

*How much
undisturbed habitat
is gained if all
seismic lines are
restored?*

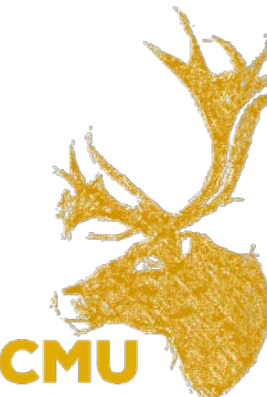
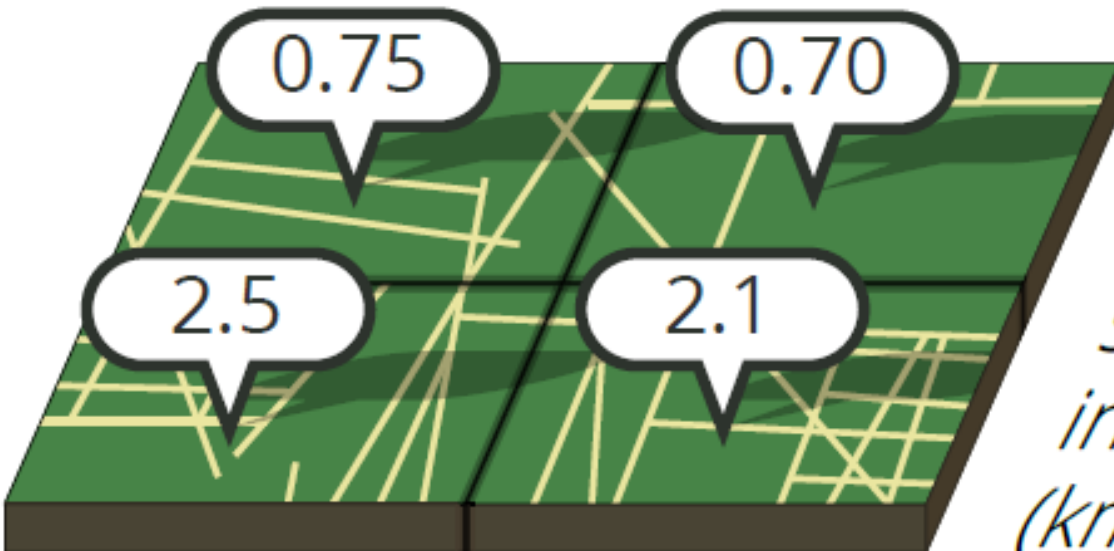
*(% disturbed - %
disturbed if restored)*



the BUCK:

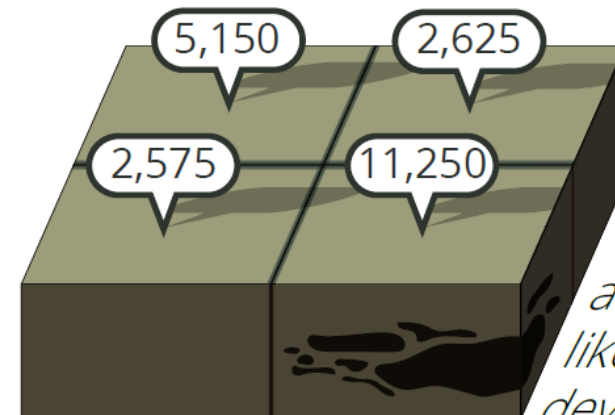
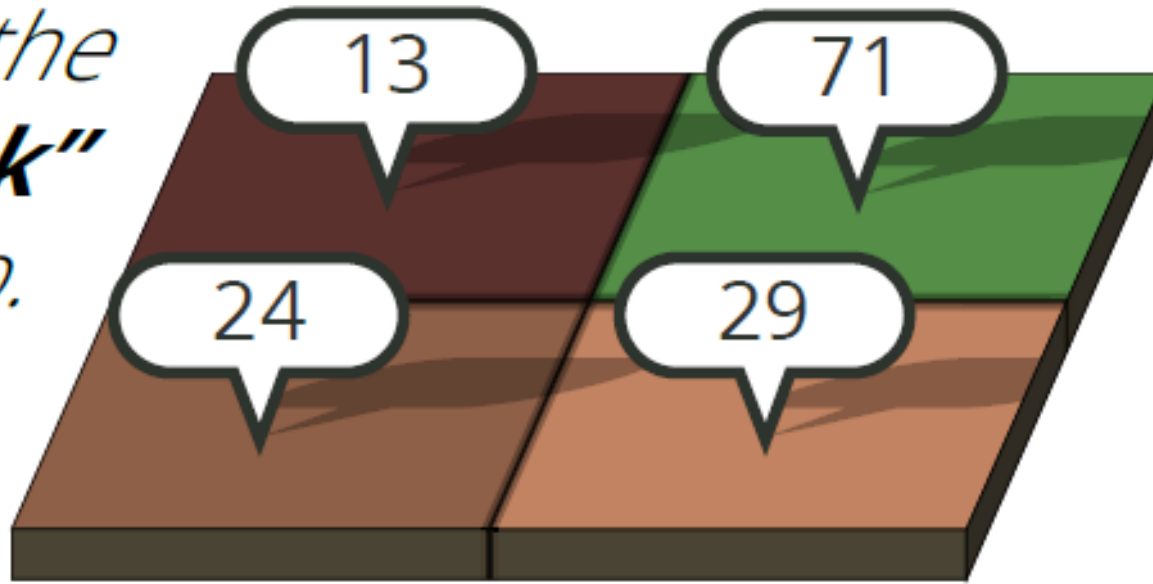
*The density of
seismic lines that are
in each township.*

(km/km²)



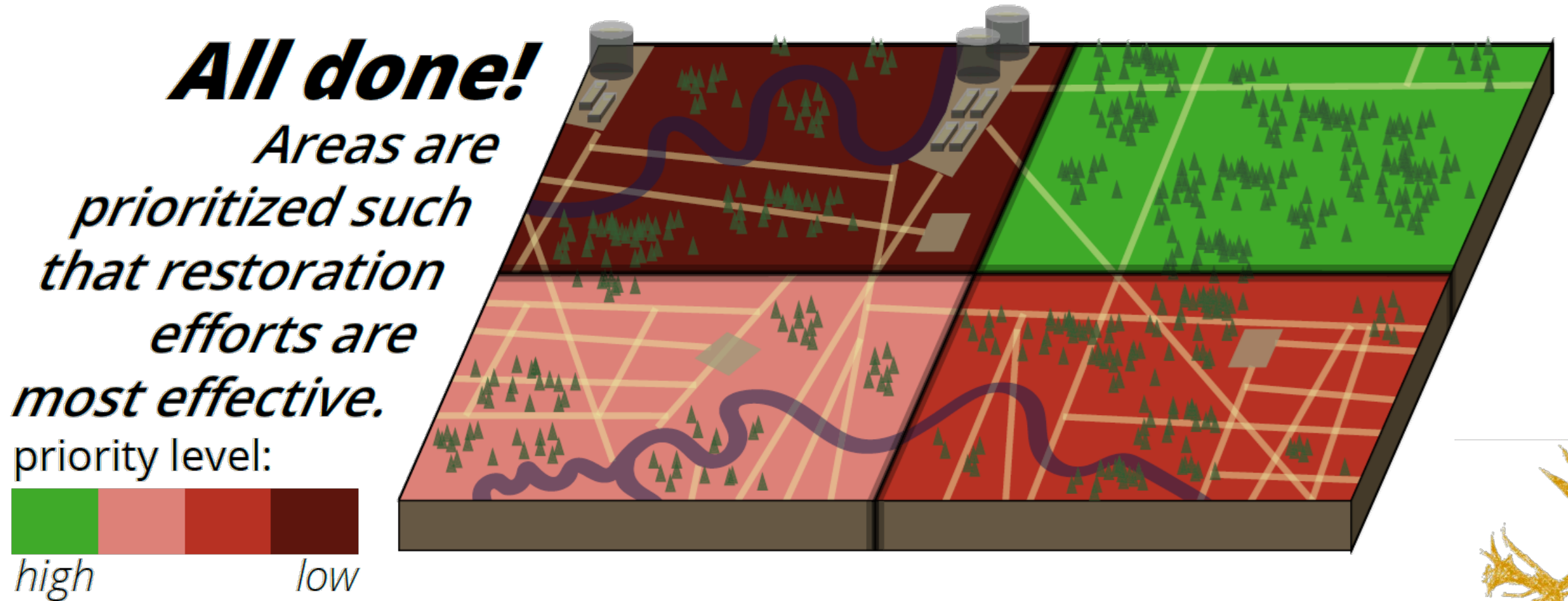
The Approach:

*We divide to get the
“bang-for-buck”
of each township.
Higher
“bang-for-buck”
= higher priority.*



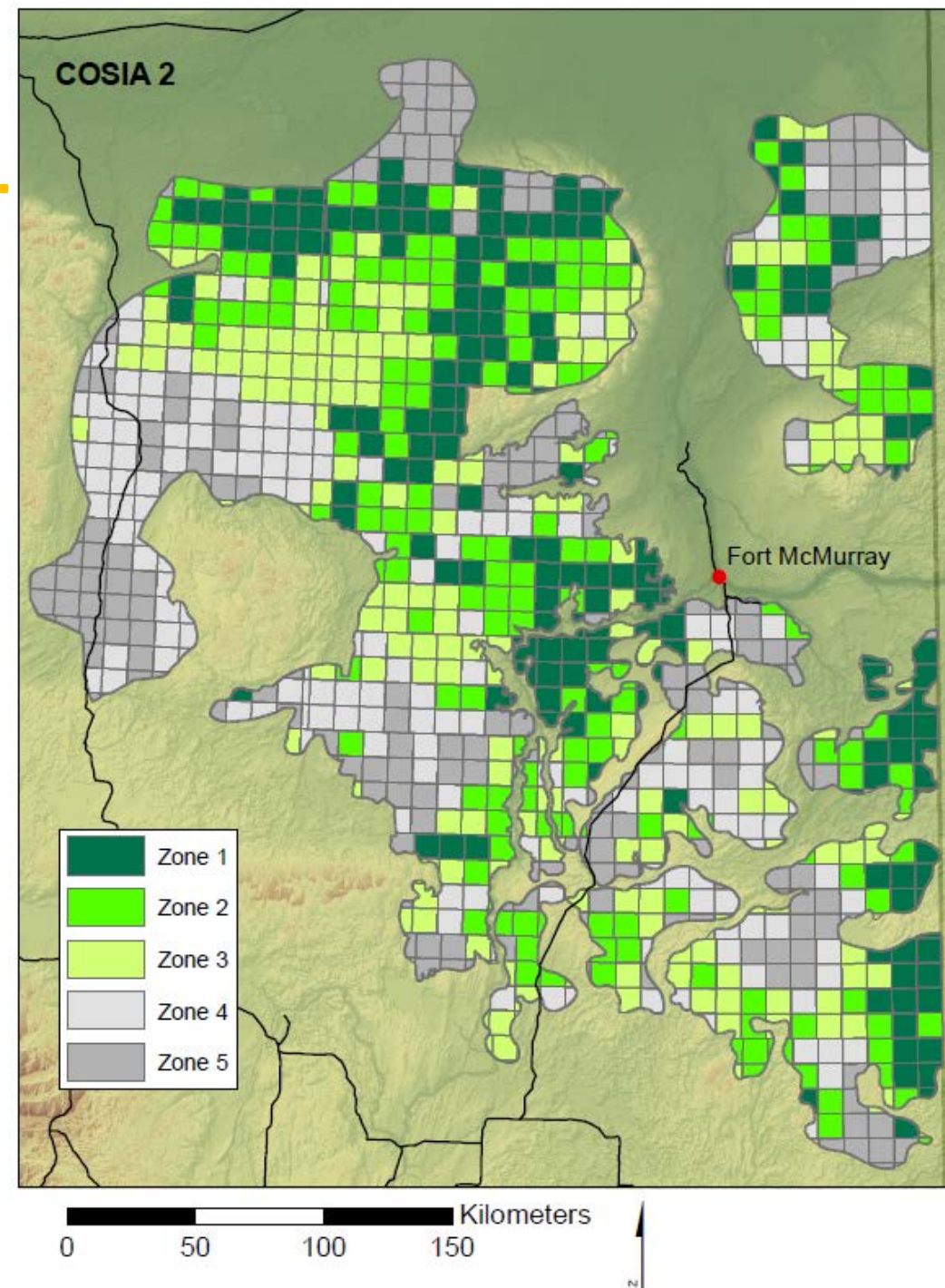
*Lastly, adjust
to **resource
value** (\$MM CDN).
to pull restoration
away from areas
likely to be
developed in the
near future.*

The Approach:



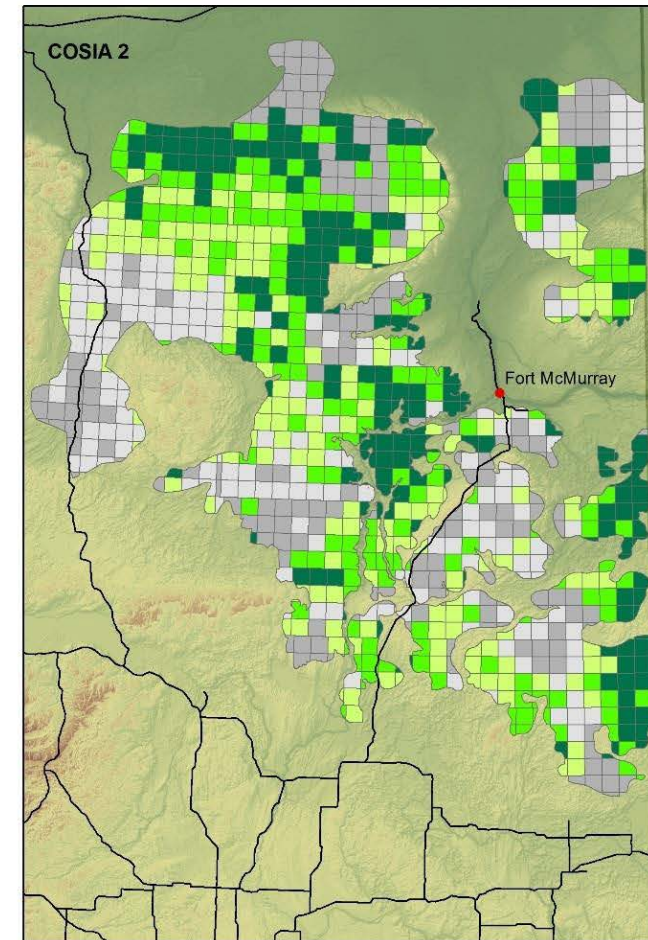
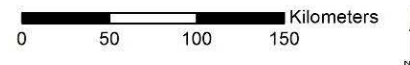
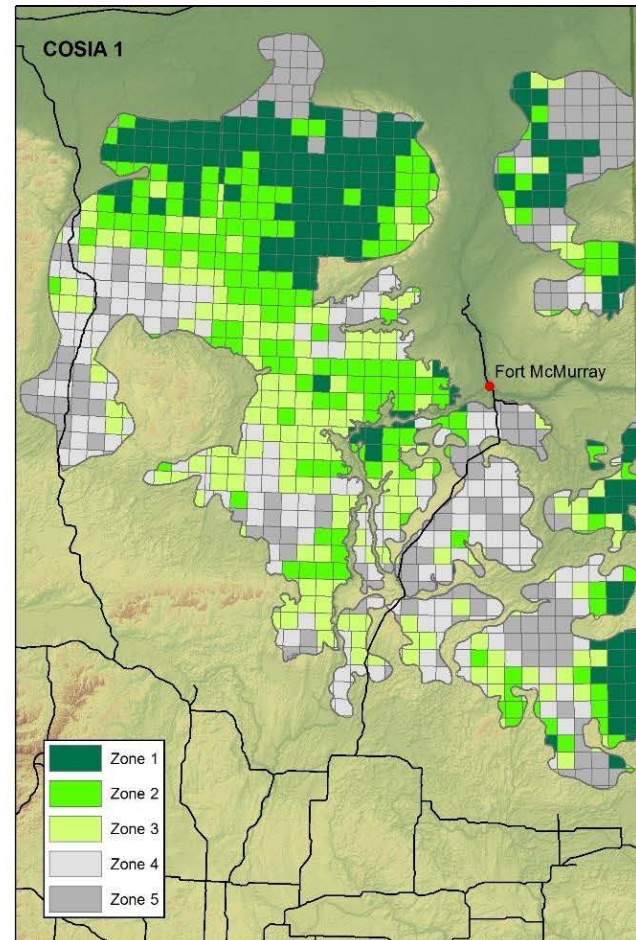
The “End” Result

- Each township is ranked into priority Zones.
- Currently being used to plan restoration programs by RICC



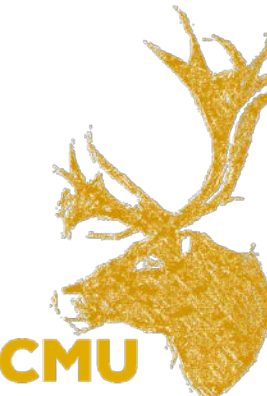
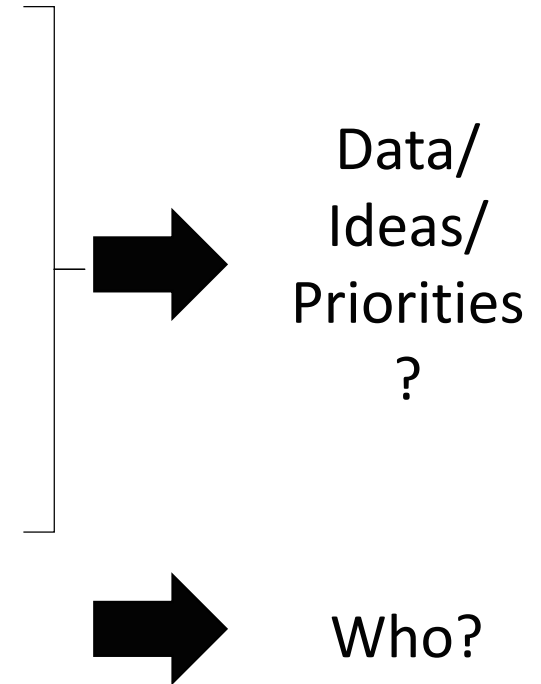
The “End” Result

- Each township is ranked into priority Zones.
- Currently being used to plan restoration programs by RICC
- THIS IS AN ITERATIVE PROCESS



What's next?

- Incorporating caribou habitat value
- Multi-scalar
- Future industry disturbance
- Incorporating additional stakeholders/collaborators

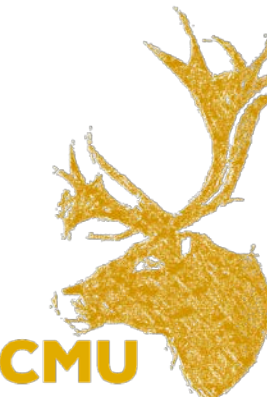


Questions?

We are always keen to add to our collaborators

Rely on data collection and scientific input from multiple stakeholders

For more information about our projects, go to cmu.abmi.ca



Questions?

We are always keen to add to our collaborators

Rely on data collection and scientific input from multiple stakeholders

What gaps do you see in our overall research program?

Do you have suggestions for our Prioritization work?

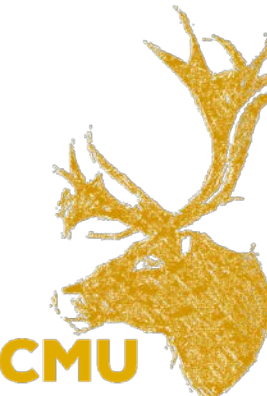
Is there something you are interested in contributing to any of our projects?

Can any of our projects be further tailored to meet new needs?

Do you see a missing link between our science and outreach?

Do you have ideas for how we can better communicate?

For more information about our projects, go to cmu.abmi.ca



Acknowledgements



For more information about our projects, go to cmu.abmi.ca

